

121° 9' 30" 121° 9' 121° 8' 30" 121° 8' 121° 7' 30" 121° 7' W WGS84

38° 47' N

38° 47' N

38° 46' 30"

38° 46' 30"

38° 46'

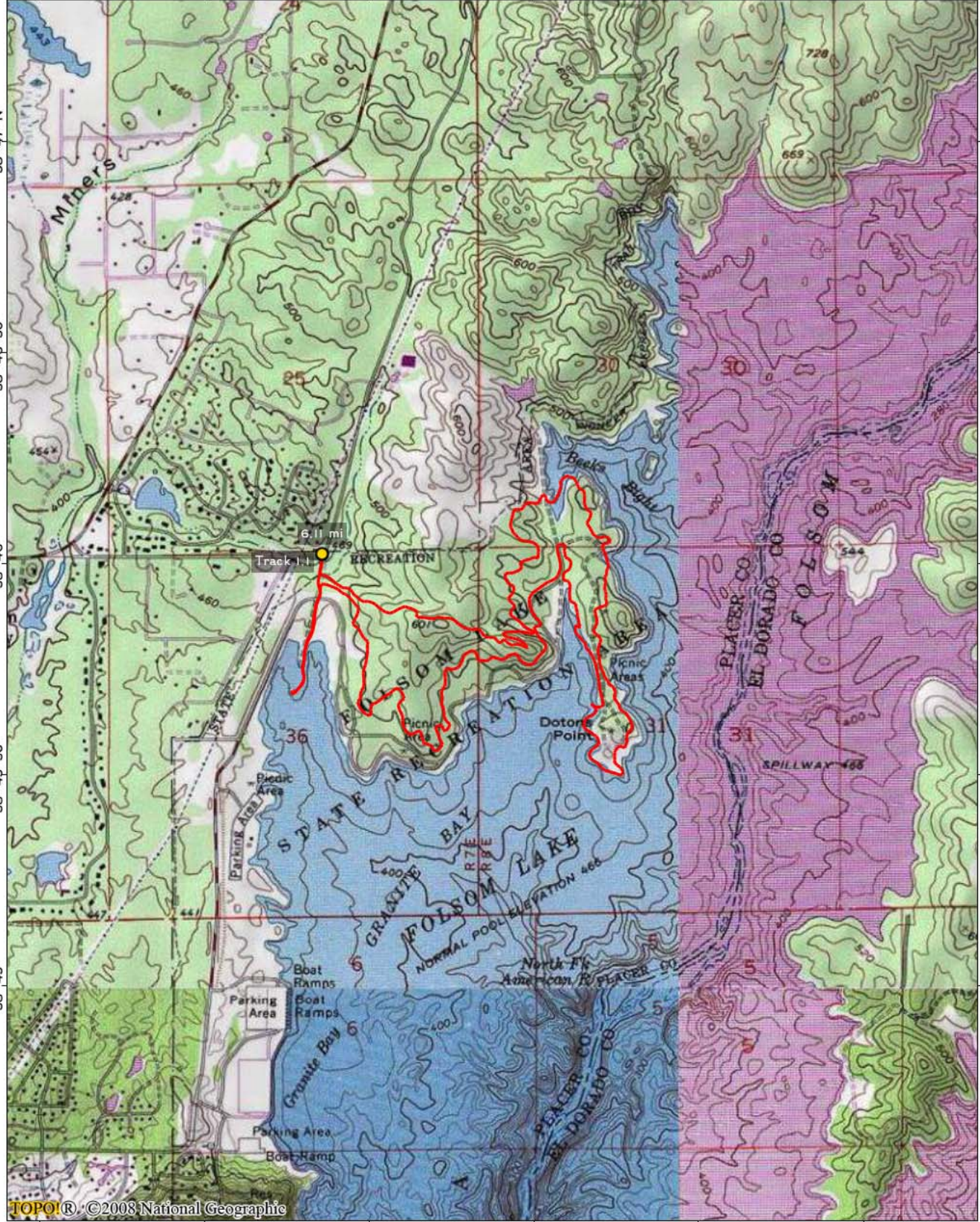
38° 46'

38° 45' 30"

38° 45' 30"

38° 45'

38° 45'



TOPOI® ©2008 National Geographic

121° 9' 30" 121° 9' 121° 8' 30" 121° 8' 121° 7' 30" 121° 7' W WGS84

